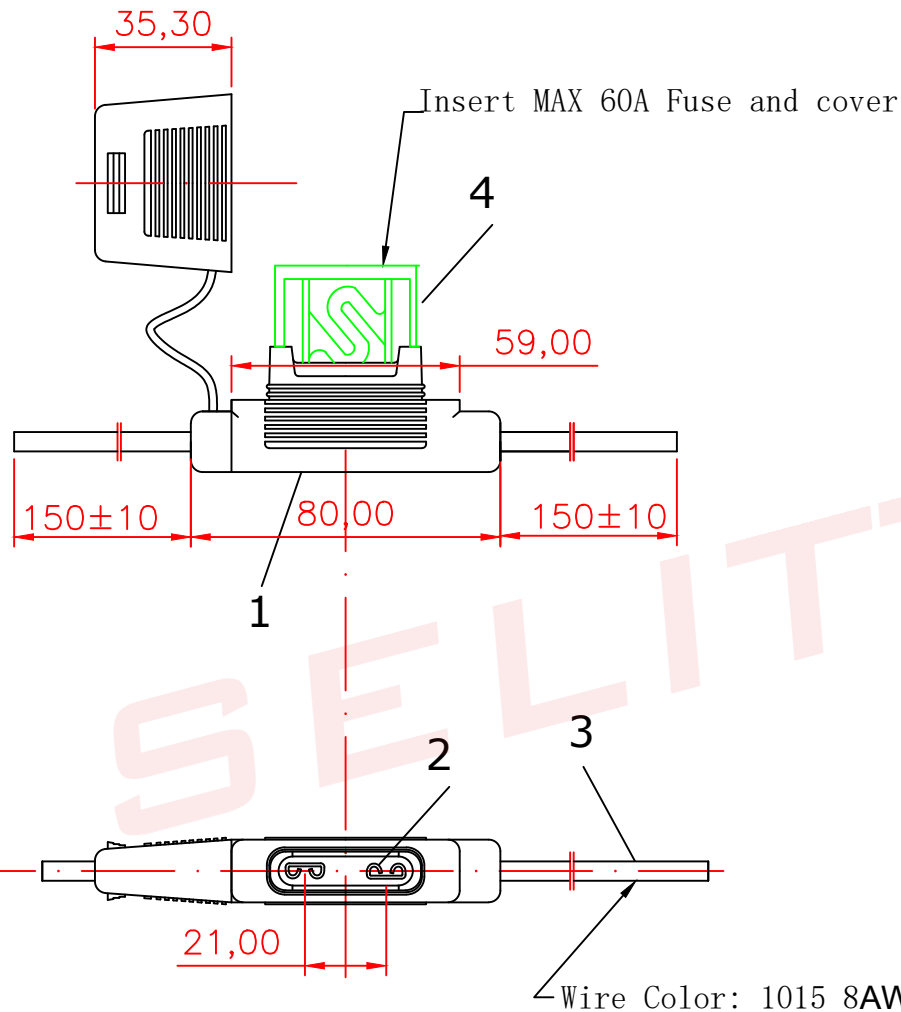


ALL INFORMATION CONTAINED OR DISCLOSED BY THIS DOCUMENT IS CONSIDERED CONFIDENTIAL AND PROPRIETARY BY ANDU ELECTRONICS CO.,LTD. ALL DESIGN, MANUFACTURING, USE, REPRODUCTION, AND ALL SALES RIGHTS, ARE EXPRESSLY RESERVED BY ANDU TO ANDU ELECTRONICS CO.,LTD. AND COMMUNICATION OF THIS INFORMATION TO OTHERS IS PROHIBITED WITHOUT THE PRIOR WRITTEN CONSENT OF SELLER

DRAWING REVISIONS				
REV	S/N	DESCRIPTION	APPROVED	DATE
A	20080210-04	ORIGINAL RELEASE		






NOTES: UNLESS OTHERWISE SPECIFIED.

1. Applicable: For MAX-N/AMT-N Fuse.
2. Electrical: Rated for current up to 80A.
3. Insulating body: PVC.
4. Contact: Brass with Tin plated.
5. With other wire sizes or leangths available on special order.



东莞市赛力特保险丝制造有限公司  
DONGGUAN SELITTE FUSES MFG CO., LTD

4	F-MAX-N	FUSE 60A	1		Blue
3	W-MAX-N	Wire	2	1015 8AWG	Red
2	TC-MAX-N	TERMINAL CONTACT	1	Brass	Tin Plated
1	FH-MAX-N	Body	1	PVC	Black
ITEM	P/N	DESCRIPTION	QTY	Material	REMARKS

RoHS COMPLIANT			FUSEHOLDER						
UNLESS OTHERWISE STATED									
WALL THICKNESS		 MM				FOR MAX-N/AMT-N			
LINEAR	.XX	±0.15 MM	DSGN	Tommy Qiu	07-12-08	SCALE	free		
	.XXX	±0.05 MM							
ANGULAR		±0.5 DEG	DFTS	Tommy Qiu	07-12-08	SHEET	1 OF 1		
DRAFT ANGLE/SIDE		0.5 °MAX							
BURR & FLASH		0.10 MAX	CHKD			PART NO.		REV	
BREAK CORNERS		0.20 R.MAX							
PARTING LINE MISMATCH		0.05 MAX	APPD	SL-709L-380-8					A