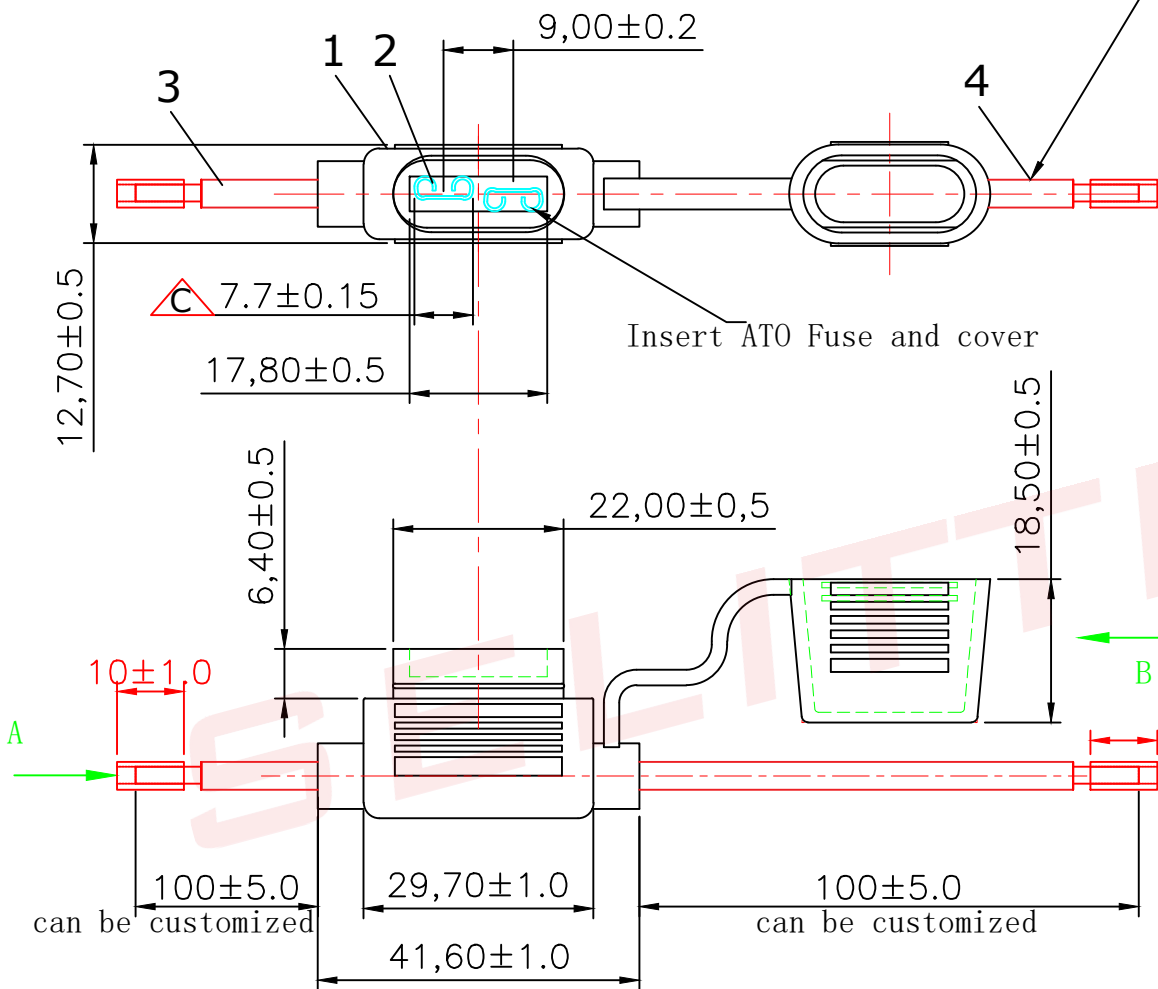
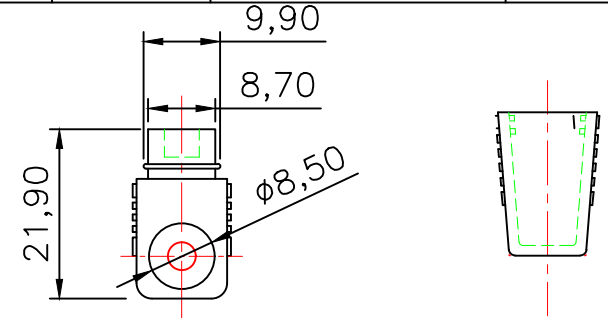


ALL INFORMATION CONTAINED OR DISCLOSED BY THIS DOCUMENT IS CONSIDERED CONFIDENTIAL AND PROPRIETARY BY ANDU ELECTRONICS CO.LTD. ALL DESIGN, MANUFACTURING, USE, REPRODUCTION, AND ALL SALES RIGHTS, ARE EXPRESSLY RESERVED BY AND TO ANDU ELECTRONICS CO.LTD. AND COMMUNICATION OF THIS INFORMATION TO OTHERS IS PROHIBITED WITHOUT THE PRIOR WRITTEN CONSENT OF SELLER

Wire: 1015 10-22AWG red
can be customized



DRAWING REVISIONS				
REV	S/N	DESCRIPTION	APPROVED	DATE
A	20080210-03	ORIGINAL RELEASE		
B	20191226-08	Updated the drawing		
C	20231108-02	updated the terminal size Add the 94V0-NP		






Section A Section B

NOTES: UNLESS OTHERWISE SPECIFIED.

1. Applicable: For ATO-N Fuse.
2. Electrical: Rated for current up to 30A.
3. Insulating body: PVC 94-V0 with NP $\triangle C$
4. Contact: Brass with Tin plated.
5. With other wire sizes or leangths available on special order.
6. Component Level Temperature Range: -40°C to +105°C
7. IP Rating: IP67.

5	ATO	blade fuse	1		
4	W-ATO-N	Wire	1	customized	customized
3	W-ATO-N	Wire	1	customized	customized
2	TC-ATO-N	TERMINAL CONTACT	1	Brass	Tin Plated
1	FH-ATO-N	Body	1	PVC	Black
ITEM	P/N	DESCRIPTION	QTY	Material	REMARKS

		东莞市赛力特保险丝制造有限公司 SELITTEL FUSES MFG CO., LTD								
RoHS COMPLIANT			FUSEHOLDER							
UNLESS OTHERWISE STATED										
WALL THICKNESS				FOR ATO-N						
LINEAR	.XX	±0.15 MM								
	.XXX	±0.05 MM								
ANGULAR		±0.5 DEG		DSGN	Tommy Qiu	07-12-08	SCALE	free		
DRAFT ANGLE/SIDE		0.5 °MAX								DFTS
BURR & FLASH		0.10 MAX		CHKD			PART NO.			
BREAK CORNERS		0.20 R.MAX								APPD
PARTING LINE MISMATCH		0.05 MAX								