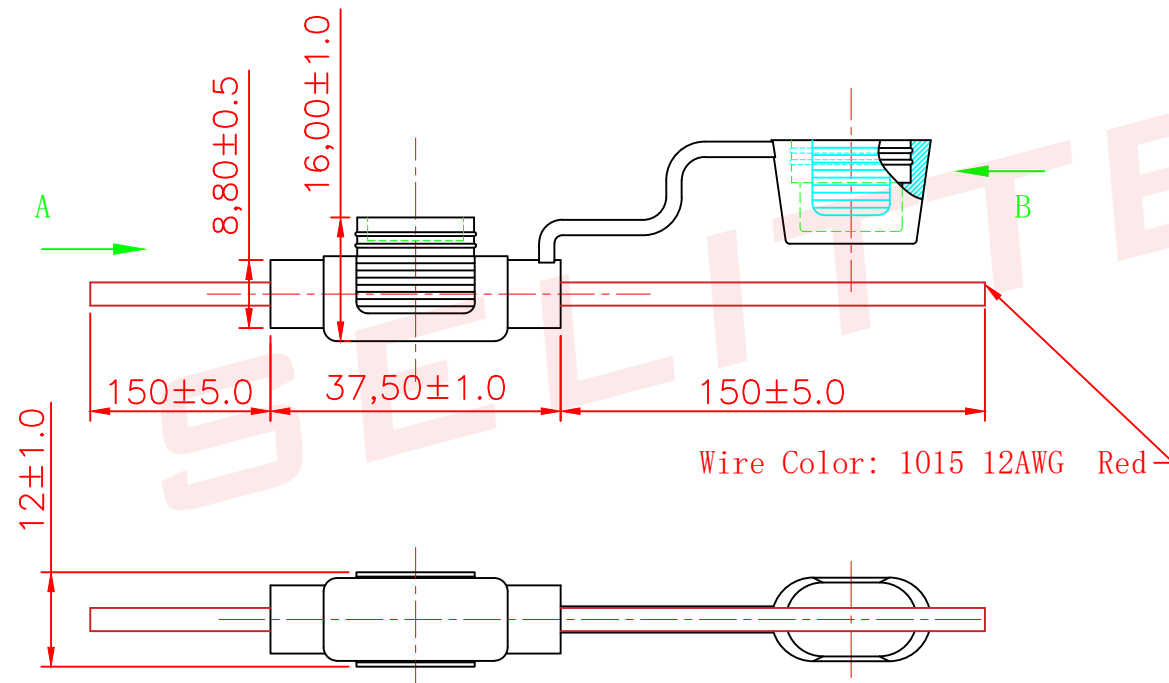
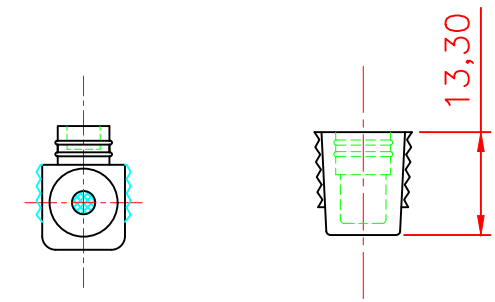
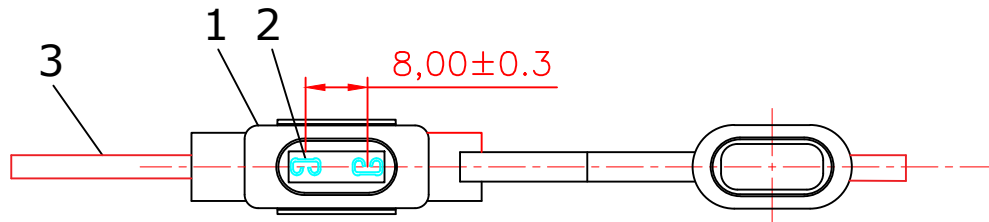


ALL INFORMATION CONTAINED OR DISCLOSED BY THIS DOCUMENT IS CONSIDERED CONFIDENTIAL AND PROPRIETARY BY ANDU ELECTRONICS CO.,LTD. ALL DESIGN, MANUFACTURING, USE, REPRODUCTION, AND ALL SALES RIGHTS, ARE EXPRESSLY RESERVED BY ANDU TO ANDU ELECTRONICS CO.,LTD. AND COMMUNICATION OF THIS INFORMATION TO OTHERS IS PROHIBITED WITHOUT THE PRIOR WRITTEN CONSENT OF SELLER

DRAWING REVISIONS				
REV	S/N	DESCRIPTION	APPROVED	DATE
A	20080210-04	ORIGINAL RELEASE		



NOTES: UNLESS OTHERWISE SPECIFIED.

1. Applicable: For ATM-N or MIN-N Fuse.
2. Electrical: Rated for current up to 30A.
3. Insulating body: PVC.
4. Contact: Brass with Tin plated.
5. With other wire sizes or lengths available on special order.
6. Range of wire gauge #12-#22.

东莞市赛力特保险丝制造有限公司  
DONGGUAN SELITTEL FUSES MFG CO., LTD

RoHS COMPLIANT		FUSEHOLDER		Customer	
UNLESS OTHERWISE STATED		FOR MIN-N or ATM-N			
WALL THICKNESS		MM			
LINEAR	.XX ±0.15 MM				
	.XXX ±0.05 MM				
ANGULAR	±0.5 DEG				
DRAFT ANGLE/SIDE	0.5 °MAX				
BURR & FLASH	0.10 MAX				
BREAK CORNERS	0.20 R.MAX				
PARTING LINE MISMATCH	0.05 MAX				

DSGN Tommy Qiu 07-12-08 SCALE free

DFTS Tommy Qiu 07-12-08 SHEET 1 OF 1

CHKD

PART NO.

REV A

SL-709CA-340-12-R

2	W-MIN-N	Wire	2	1015 12AWG	Red
2	TC-MIN-N	TERMINAL CONTACT	1	Brass	Tin Plated
1	FH-MIN-N	Body	1	PVC	Black
ITEM	P/N	DESCRIPTION	QTY	Material	REMARKS

A

A