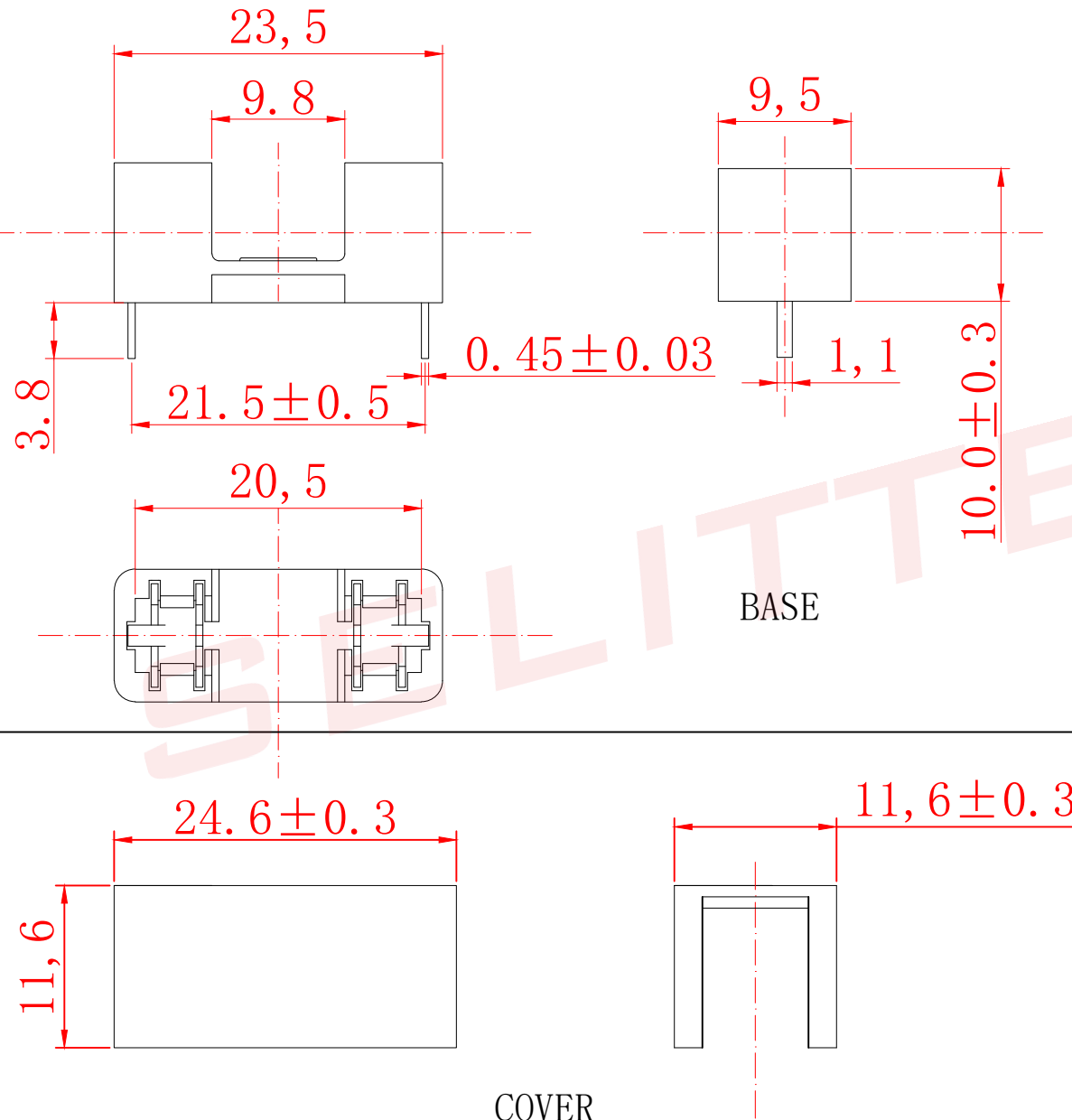


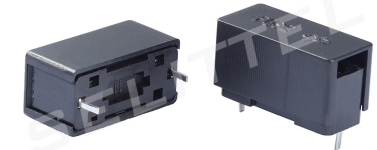
ALL INFORMATION CONTAINED OR DISCLOSED BY THIS DOCUMENT IS CONSIDERED CONFIDENTIAL AND PROPRIETARY BY ANDU ELECTRONICS CO.,LTD. ALL DESIGN, MANUFACTURING, USE, REPRODUCTION, AND ALL SALES RIGHTS, ARE EXPRESSLY RESERVED BY ANDU ELECTRONICS CO.,LTD. AND COMMUNICATION OF THIS INFORMATION TO OTHERS IS PROHIBITED WITHOUT THE PRIOR WRITTEN CONSENT OF ANDU ELECTRONICS CO.,LTD.

DRAWING REVISIONS

REV	S/N	DESCRIPTION	APPROVED	DATE
A	20080210-03	ORIGINAL RELEASE		



SELITTEL



NOTES: UNLESS OTHERWISE SPECIFIED.

1. Applicable: For 5X20 tube fuse.
2. Electrical: Rated for current up to 10A250VAC
3. Insulating Base body: PA
Contact: Brass with Tin plated



东莞市赛力特保险丝制造有限公司
DONGGUAN SELITTEL FUSES MFG CO., LTD

RoHS COMPLIANT

UNLESS OTHERWISE STATED

WALL THICKNESS	MM
LINEAR .XX	±0.15 MM
.XXX	±0.05 MM
ANGULAR	±0.5 DEG
DRAFT ANGLE/SIDE	0.5 ° MAX
BURR & FLASH	0.10 MAX
BREAK CORNERS	0.20 R. MAX
PARTING LINE MISMATCH	0.05 MAX

PCB MOUNT FUSEHOLDER

FOR 5X20fuse

DSGN	Tommy Qiu	07-12-08	SCALE	free	
DFTS	Tommy Qiu	07-12-08	SHEET	1 OF 1	
CHKD			PART NO.	SL-68	REV
APPD					A