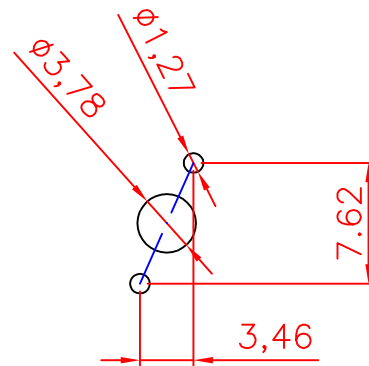
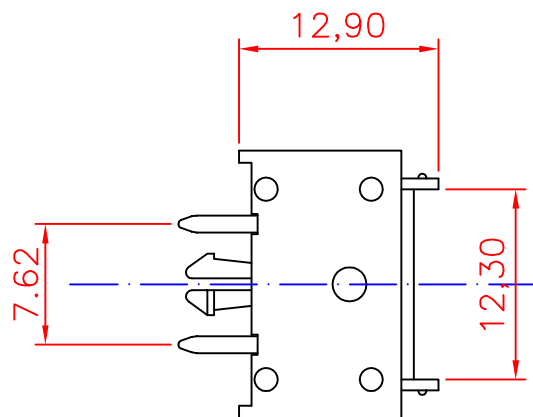
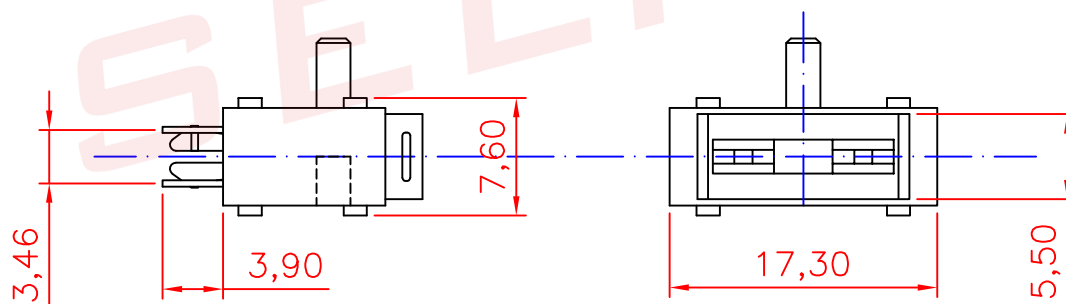


ALL INFORMATION CONTAINED OR DISCLOSED BY THIS DOCUMENT IS CONSIDERED CONFIDENTIAL AND PROPRIETARY BY SELLI ELECTRONICS CO.,LTD. ALL DESIGN, MANUFACTURING, USE, REPRODUCTION, AND ALL SALES RIGHTS, ARE EXPRESSLY RESERVED BY AND TO SELLI ELECTRONICS CO.,LTD. AND COMMUNICATION OF THIS INFORMATION TO OTHERS IS PROHIBITED WITHOUT THE PRIOR WRITTEN CONSENT OF SELLI

DRAWING REVISIONS				
REV	S/N	DESCRIPTION	APPROVED	DATE
A	20080210-09	ORIGINAL RELEASE		



mounting pattern



NOTES: UNLESS OTHERWISE SPECIFIED.

1. Applicable: For MINI blade fuse.
2. Electrical: Rated for current up to 15A32VAC
3. Insulating Base body: PA +30%GP
Contact: Brass with Tin plated



东莞市赛力特保险丝制造有限公司
SELITEL FUSES MFG CO., LTD

RoHS COMPLIANT		PCB Mount Fuseholder		CUSTOMER	
UNLESS OTHERWISE STATED		FOR MINI AUTO FUSE			
WALL THICKNESS					
LINEAR	.XX	±0.15 MM			
	.XXX	±0.05 MM			
ANGULAR		±0.5 DEG			
DRAFT ANGLE/SIDE		0.5 °MAX			
BURR & FLASH		0.10 MAX			
BREAK CORNERS		0.20 R.MAX			
PARTING LINE MISMATCH		0.05 MAX			
		DSGN	Tom	12-22-08	SCALE free
		DFTS	TOM	12-22-08	SHEET 1 OF 1
		CHKD			PART NO.
		APPD			SL-1539
				REV	A