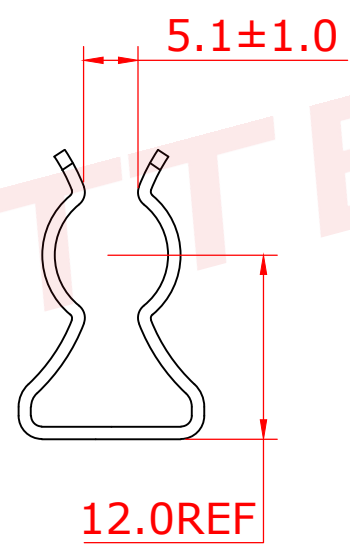
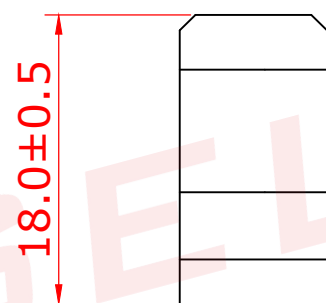
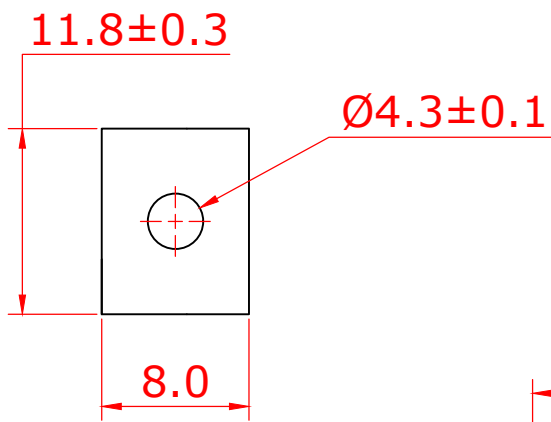



ALL INFORMATION CONTAINED OR DISCLOSED BY THIS DOCUMENT IS CONSIDERED CONFIDENTIAL AND PROPRIETARY BY ANDU ELECTRONICS CO.,LTD. ALL DESIGN, MANUFACTURING, USE, REPRODUCTION, AND ALL SALES RIGHTS, ARE EXPRESSLY RESERVED BY ANDU TO ANDU ELECTRONICS CO.,LTD. AND COMMUNICATION OF THIS INFORMATION TO OTHERS IS PROHIBITED WITHOUT THE PRIOR WRITTEN CONSENT OF SELITEL

| DRAWING REVISIONS | | | | |
|-------------------|-------------|------------------|----------|------|
| REV | S/N | DESCRIPTION | APPROVED | DATE |
| A | 20080210-05 | ORIGINAL RELEASE | | |



NOTES: UNLESS OTHERWISE SPECIFIED.

- 1. material: 磷铜Phosphor Bronze, T=0.7mm;
- 2. finish: 镀镍后锡Tin plated;
- 3. removed burrs and sharp edge.
- 4. Mounts w/4.0mm rivet or screw.
- 5. For 10.3dia. Fuses.
- 6. Suitable rated current: 60A.



东莞市赛力特保险丝制造有限公司
DONGGUAN SELITTEL FUSES MFG CO., LTD

| | | | | | | |
|-------------------------|------------|------------------------|-----------|----------|----------|--------|
| RoHS COMPLIANT | | Fuse Clip W/O ear tpye | | | | |
| UNLESS OTHERWISE STATED | | 10x38mm Fuse | | | | |
| WALL THICKNESS | MM | DSGN | Tommy Qiu | 07-12-08 | SCALE | free |
| LINEAR .XX | ±0.15 MM | DFTS | Tommy Qiu | 07-12-08 | SHEET | 1 OF 1 |
| LINEAR .XXX | ±0.05 MM | CHKD | | | PART NO. | |
| ANGULAR | ±0.5 DEG | APPD | | | REV | A |
| DRAFT ANGLE/SIDE | 0.5 °MAX | SL-1038-3 | | | | |
| BURR & FLASH | 0.10 MAX | | | | | |
| BREAK CORNERS | 0.20 R.MAX | | | | | |
| PARTING LINE MISMATCH | 0.05 MAX | | | | | |

