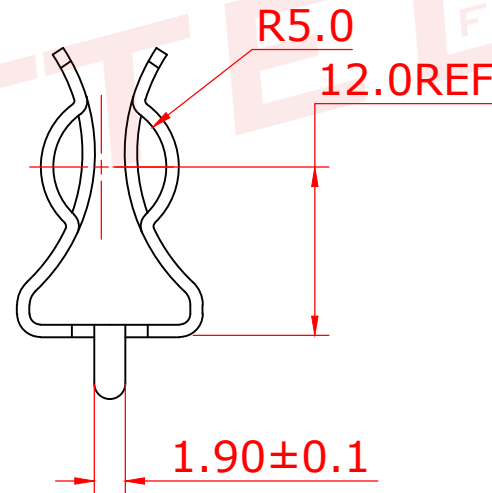
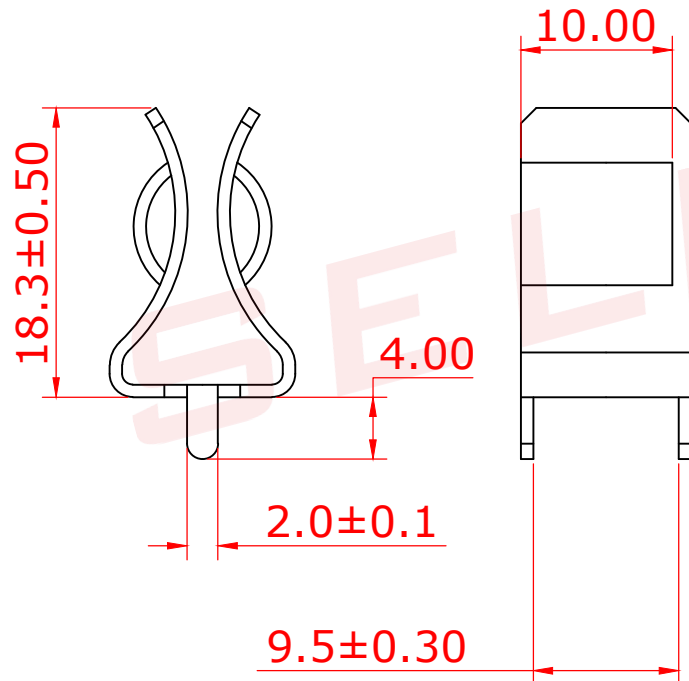
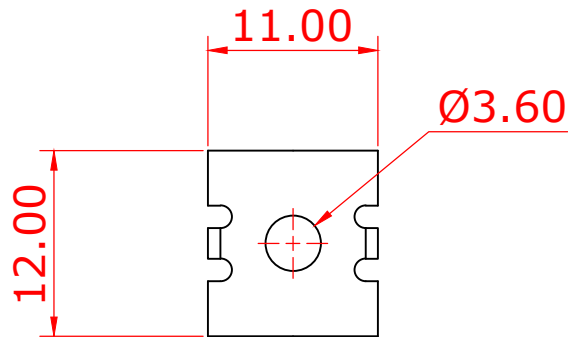


ALL INFORMATION CONTAINED OR DISCLOSED BY THIS DOCUMENT IS CONSIDERED CONFIDENTIAL AND PROPRIETARY BY ANDU ELECTRONICS CO.,LTD. ALL DESIGN, MANUFACTURING, USE, REPRODUCTION, AND ALL SALES RIGHTS, ARE EXPRESSLY RESERVED BY ANDU TO ANDU ELECTRONICS CO.,LTD. AND COMMUNICATION OF THIS INFORMATION TO OTHERS IS PROHIBITED WITHOUT THE PRIOR WRITTEN CONSENT OF SELLER

DRAWING REVISIONS				
REV	S/N	DESCRIPTION	APPROVED	DATE
A	20080210-04	ORIGINAL RELEASE		



NOTES: UNLESS OTHERWISE SPECIFIED.

1. material: 黄铜Spring Brass, T=0.8mm;
2. finish: 镀镍Ni plated;
3. removed burrs and sharp edge.
4. Mounts w/3.2mm rivet or screw.
5. For 10.3dia. Fuses.
6. Suitable rated current: 30A.



东莞市赛力特保险丝制造有限公司  
DONGGUAN SELITTE FUSES MFG CO., LTD

RoHS COMPLIANT		Fuse Clip W/ear type				
UNLESS OTHERWISE STATED		10x38mm Fuse				
WALL THICKNESS	MM					
	MM					
LINEAR	.XX	±0.15	MM	DSGN	Tommy Qiu	07-12-08
	.XXX	±0.05	MM	SCALE	free	
ANGULAR	±0.5	DEG		DFTS	Tommy Qiu	07-12-08
DRAFT ANGLE/SIDE	0.5	°MAX		SHEET	1 OF 1	
BURR & FLASH	0.10	MAX		PART NO.		
BREAK CORNERS	0.20	R.MAX		CHKD		
PARTING LINE MISMATCH	0.05	MAX		APPD		
SL-1038-2					REV	A