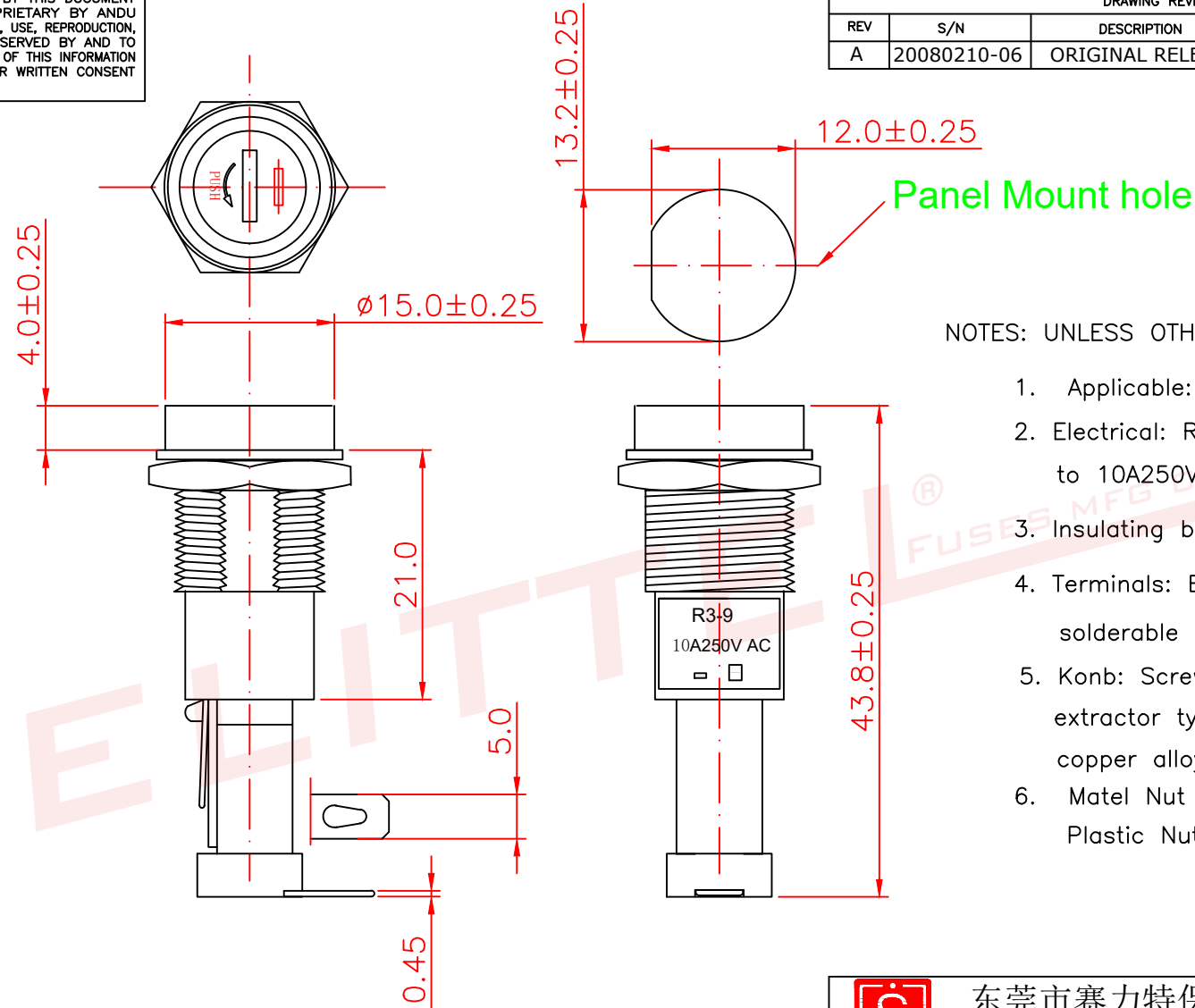


ALL INFORMATION CONTAINED OR DISCLOSED BY THIS DOCUMENT IS CONSIDERED CONFIDENTIAL AND PROPRIETARY BY ANDU ELECTRONICS CO.,LTD. ALL DESIGN, MANUFACTURING, USE, REPRODUCTION, AND ALL SALES RIGHTS, ARE EXPRESSLY RESERVED BY ANDU TO ANDU ELECTRONICS CO.,LTD. AND COMMUNICATION OF THIS INFORMATION TO OTHERS IS PROHIBITED WITHOUT THE PRIOR WRITTEN CONSENT OF SELLER

DRAWING REVISIONS				
REV	S/N	DESCRIPTION	APPROVED	DATE
A	20080210-06	ORIGINAL RELEASE		

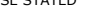




NOTES: UNLESS OTHERWISE SPECIFIED.

1. Applicable: For 6x30mm Fuse.
2. Electrical: Rated for current up to 10A250V AC.
3. Insulating body: PBT
4. Terminals: Brass with Tin-plated solderable type.
5. Konb: Screw-driver slot fuse extractor type with nickle-plated copper alloy insert. spring loaded.
6. Matel Nut Type: R3-9B
Plastic Nut Type: R3-9A



东莞市赛力特保险丝制造有限公司
DONGGUAN SELITTEL FUSES MFG CO., LTD

RoHS COMPLIANT				Panel Mount Fuseholder FOR 6x30mm fuse				CUSTOMER	
UNLESS OTHERWISE STATED									
WALL THICKNESS		 MM							
LINEAR	.XX	±0.15 MM							
	.XXX	±0.05 MM							
ANGULAR		±0.5 DEG		DSGN	Tom	12-22-08	SCALE	free	
DRAFT ANGLE/SIDE		0.5 °MAX		DFTS	TOM	12-22-08	SHEET	1 OF 1	
BURR & FLASH		0.10 MAX		CHKD			PART NO.		REV
BREAK CORNERS		0.20 R.MAX		APPD			R3-9		A
PARTING LINE MISMATCH		0.05 MAX							