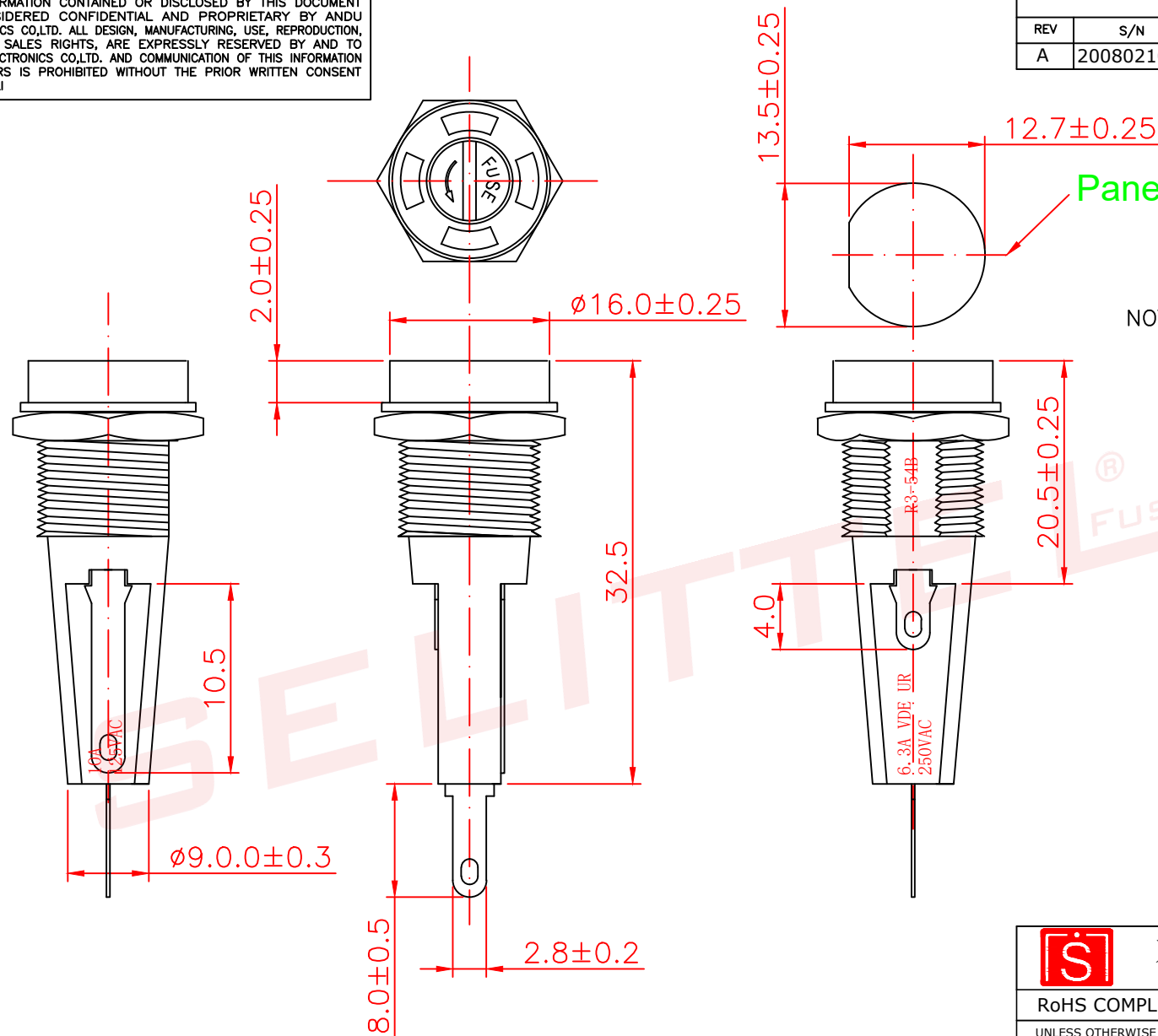


ALL INFORMATION CONTAINED OR DISCLOSED BY THIS DOCUMENT IS CONSIDERED CONFIDENTIAL AND PROPRIETARY BY ANDU ELECTRONICS CO.LTD. ALL DESIGN, MANUFACTURING, USE, REPRODUCTION, AND ALL SALES RIGHTS, ARE EXPRESSLY RESERVED BY AND TO ANDU ELECTRONICS CO.LTD. AND COMMUNICATION OF THIS INFORMATION TO OTHERS IS PROHIBITED WITHOUT THE PRIOR WRITTEN CONSENT OF SELL

DRAWING REVISIONS				
REV	S/N	DESCRIPTION	APPROVED	DATE
A	20080210-04	ORIGINAL RELEASE		






## Panel Mount hole

NOTES: UNLESS OTHERWISE SPECIFIED,

1. Applicable: For 5x20mm Fuse.
2. Electrical: Rated for current up to 10A125VAC or 6.3A250V.
3. Insulating body: PBT
4. Terminals: Brass with Tin-plated solderable type.
5. Konb: Screw-driver slot fuse extractor type with nickle-plated copper alloy insert. spring loaded.



东莞市赛力特保险丝制造有限公司  
DONGGUAN SELITTEL FUSES MFG CO., LTD

RoHS COMPLIANT		Panel Mount Fuseholder FOR 5x20mm fuse				CUSTOMER	
UNLESS OTHERWISE STATED							
WALL THICKNESS	 MM	DSGN	Tom	12-22-08	SCALE	free	
LINEAR	.XX ±0.15 MM						
	.XXX ±0.05 MM	DFTS	TOM	12-22-08	SHEET	1 OF 1	
ANGULAR	±0.5 DEG						
DRAFT ANGLE/SIDE	0.5 °MAX	CHKD			PART NO.		REV
BURR & FLASH	0.10 MAX						
BREAK CORNERS	0.20 R-MAX	APPD			R3-54B		A
PARTING LINE MISMATCH	0.05 MAX						