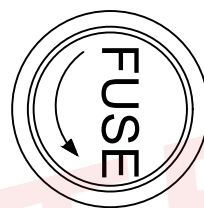
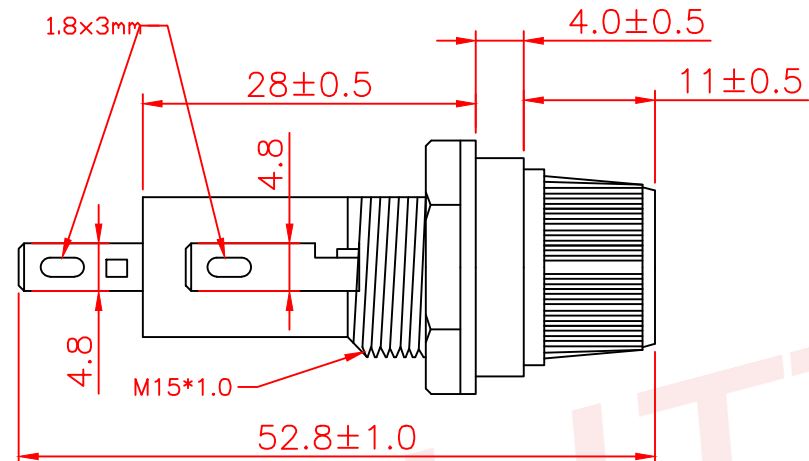
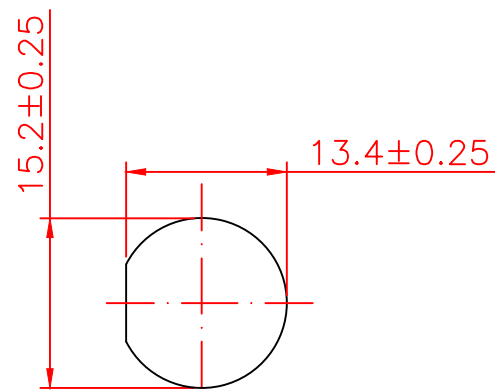


ALL INFORMATION CONTAINED OR DISCLOSED BY THIS DOCUMENT IS CONSIDERED CONFIDENTIAL AND PROPRIETARY BY ANDU ELECTRONICS CO.,LTD. ALL DESIGN, MANUFACTURING, USE, REPRODUCTION, AND ALL SALES RIGHTS, ARE EXPRESSLY RESERVED BY ANDU TO ANDU ELECTRONICS CO.,LTD. AND COMMUNICATION OF THIS INFORMATION TO OTHERS IS PROHIBITED WITHOUT THE PRIOR WRITTEN CONSENT OF SELLI


DRAWING REVISIONS				
REV	S/N	DESCRIPTION	APPROVED	DATE
A	20080210-04	ORIGINAL RELEASE		



- NOTES: UNLESS OTHERWISE SPECIFIED.
1. Applicable: For 6.35x30mm Fuse.
  2. Electrical: Rated for current up to 10A250VAC.
  3. Insulating body: Bakelite.
  4. Terminals: Brass with Ni-plated
  5. Mounted by metal nut.



Panel Mount hole



东莞市赛力特保险丝制造有限公司  
DONGGUAN SELITEL FUSES MFG CO., LTD

RoHS COMPLIANT				Panel Mount Fuseholder				CUSTOMER	
UNLESS OTHERWISE STATED				FOR 6X30mm fuse					
WALL THICKNESS		MM		DSGN		Tom		12-22-08	
LINEAR		.XX ±0.15 MM		SCALE		free			
		.XXX ±0.05 MM		SHEET		1 OF 1			
ANGULAR		±0.5 DEG		DFTS		TOM		12-22-08	
DRAFT ANGLE/SIDE		0.5 °MAX		CHKD					
BURR & FLASH		0.10 MAX		APPD					
BREAK CORNERS		0.20 R.MAX							
PARTING LINE MISMATCH		0.05 MAX							

REV

A

