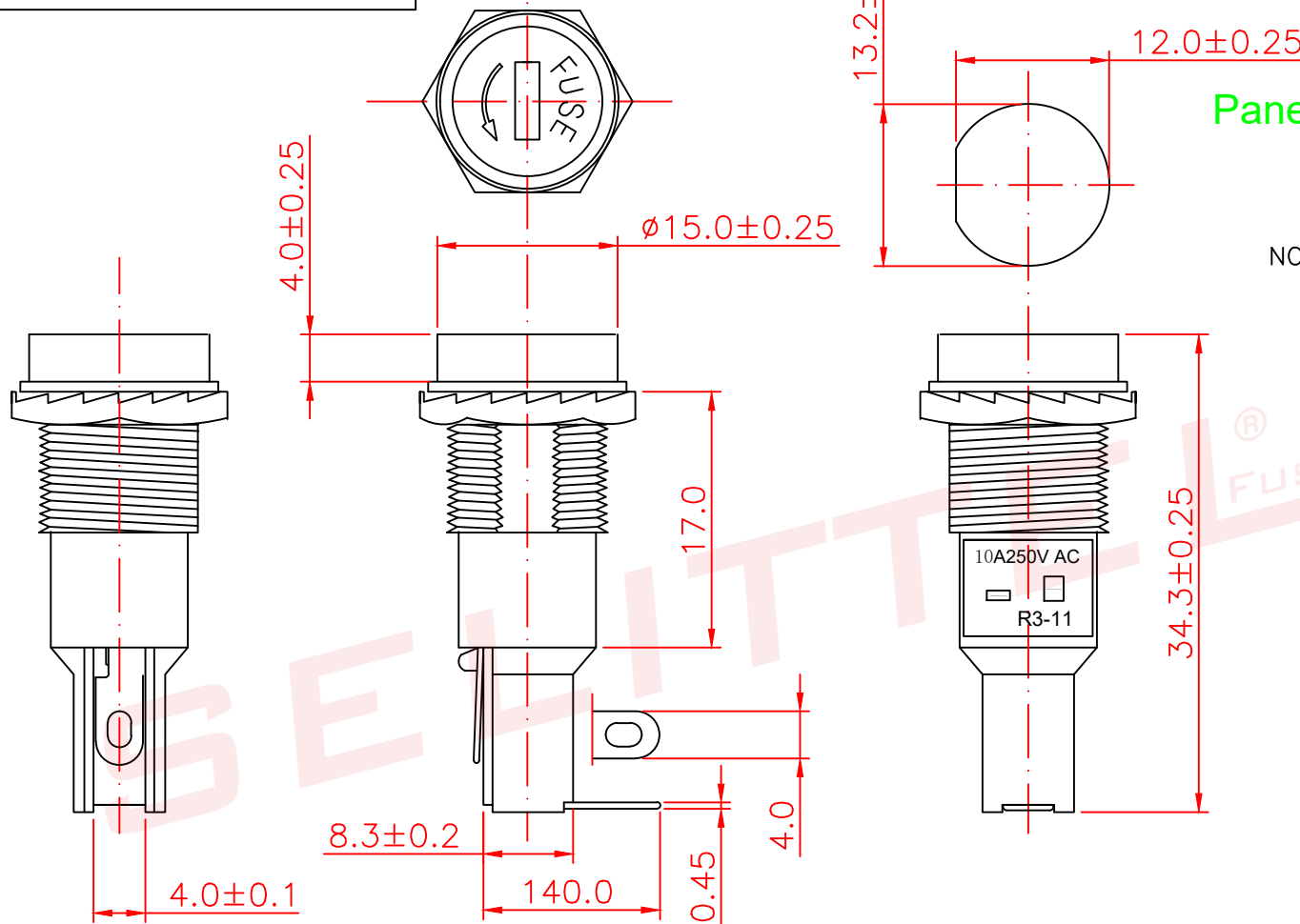


ALL INFORMATION CONTAINED OR DISCLOSED BY THIS DOCUMENT IS CONSIDERED CONFIDENTIAL AND PROPRIETARY BY ANDU ELECTRONICS CO.,LTD. ALL DESIGN, MANUFACTURING, USE, REPRODUCTION, AND ALL SALES RIGHTS, ARE EXPRESSLY RESERVED BY ANDU TO ANDU ELECTRONICS CO.,LTD. AND COMMUNICATION OF THIS INFORMATION TO OTHERS IS PROHIBITED WITHOUT THE PRIOR WRITTEN CONSENT OF SELLER

DRAWING REVISIONS				
REV	S/N	DESCRIPTION	APPROVED	DATE
A	20080210-03	ORIGINAL RELEASE		






Panel Mount hole

NOTES: UNLESS OTHERWISE SPECIFIED.

1. Applicable: For 5x20mm Fuse.
2. Electrical: Rated for current up to 10A250V AC.
3. Insulating body: Bakelite.
4. Terminals: Brass with Tin-plated solderable type.
5. Konb: Screw-driver slot fuse extractor type with nickle-plated copper alloy insert. spring loaded.
6. Screw Type: SL-609CB/R3-11B
Bayonet Type: SL-609CA/R3-11A.

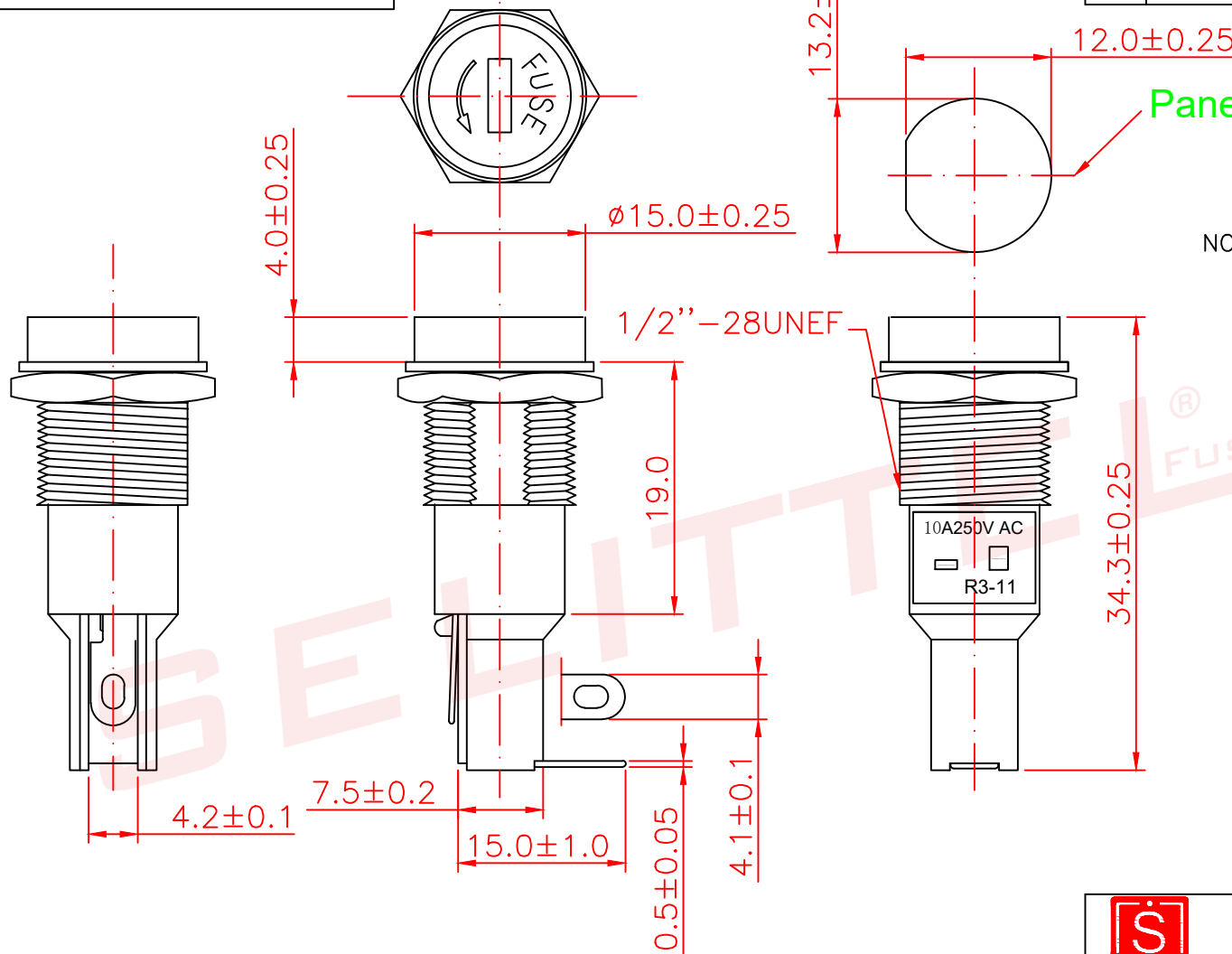


东莞市市赛力特保险丝制造有限公司
DONGGUAN SELITTEL FUSES MFG CO., LTD

RoHS COMPLIANT				Panel Mount Fuseholder FOR 5x20mm fuse				CUSTOMER	
UNLESS OTHERWISE STATED									
WALL THICKNESS		 MM		DSGN	Tom	12-22-08	SCALE	free	
LINEAR	.XX	±0.15 MM							
	.XXX	±0.05 MM							
ANGULAR		±0.5 DEG		DFTS	TOM	12-22-08	SHEET	1 OF 1	
DRAFT ANGLE/SIDE		0.5 °MAX							
BURR & FLASH		0.10 MAX		CHKD			PART NO.		REV
BREAK CORNERS		0.20 R.MAX							
PARTING LINE MISMATCH		0.05 MAX		APPD			R3-11A		A



ALL INFORMATION CONTAINED OR DISCLOSED BY THIS DOCUMENT IS CONSIDERED CONFIDENTIAL AND PROPRIETARY BY ANDU ELECTRONICS CO.,LTD. ALL DESIGN, MANUFACTURING, USE, REPRODUCTION, AND ALL SALES RIGHTS, ARE EXPRESSLY RESERVED BY ANDU TO ANDU ELECTRONICS CO.,LTD. AND COMMUNICATION OF THIS INFORMATION TO OTHERS IS PROHIBITED WITHOUT THE PRIOR WRITTEN CONSENT OF SELLER

DRAWING REVISIONS				
REV	S/N	DESCRIPTION	APPROVED	DATE
A	20080210-06	ORIGINAL RELEASE		
B	20120529-10	增加部分公差		



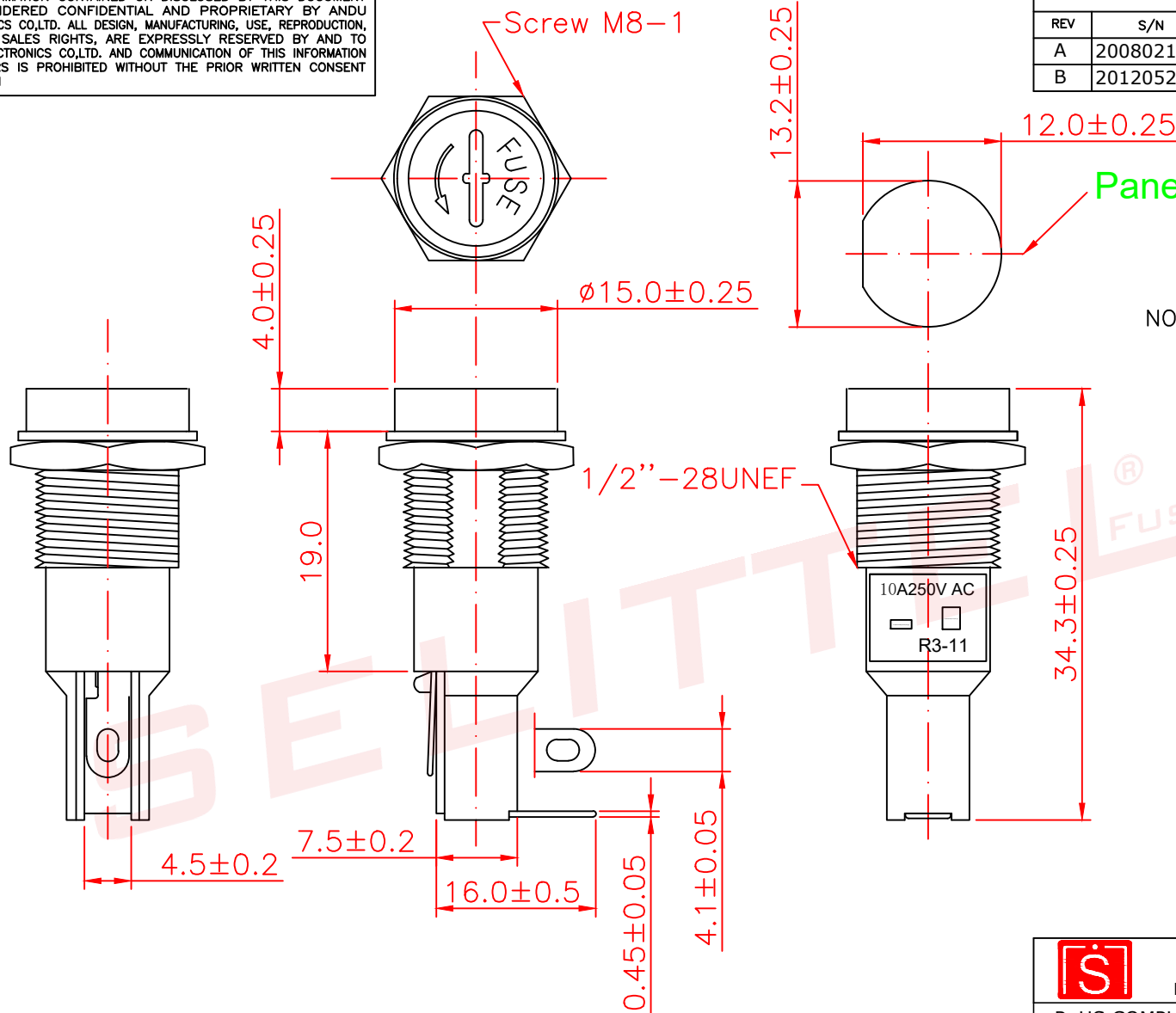
NOTES: UNLESS OTHERWISE SPECIFIED.

1. Applicable: For 5x20mm Fuse.
2. Electrical: Rated for current up to 10A250V AC.
3. Insulating body: Bakelite.
4. Terminals: Brass with Tin-plated solderable type.
5. Konb: Screw-driver slot fuse extractor type with nickle-plated copper alloy insert. spring loaded.
6. Metal nut Type: R3-11B plastic nut Type: R3-11A.
7. 未注公差: +/-0.5mm.

		东莞市市赛力特保险丝制造有限公司 DONGGUAN SELITTEL FUSES MFG CO., LTD						
RoHS COMPLIANT			Panel Mount Fuseholder FOR 5x20mm fuse				CUSTOMER	
UNLESS OTHERWISE STATED								
WALL THICKNESS			MM					
LINEAR	.X	±0.5	MM					
	.XX	±0.2	MM					
ANGULAR		±0.5	DEG					
DRAFT ANGLE/SIDE		0.5 °MAX						
BURR & FLASH		0.10	MAX					
BREAK CORNERS		0.20 R.MAX						
PARTING LINE MISMATCH		0.05	MAX					

ALL INFORMATION CONTAINED OR DISCLOSED BY THIS DOCUMENT IS CONSIDERED CONFIDENTIAL AND PROPRIETARY BY ANDU ELECTRONICS CO.,LTD. ALL DESIGN, MANUFACTURING, USE, REPRODUCTION, AND ALL SALES RIGHTS, ARE EXPRESSLY RESERVED BY ANDU TO ANDU ELECTRONICS CO.,LTD. AND COMMUNICATION OF THIS INFORMATION TO OTHERS IS PROHIBITED WITHOUT THE PRIOR WRITTEN CONSENT OF SELLER

DRAWING REVISIONS				
REV	S/N	DESCRIPTION	APPROVED	DATE
A	20080210-06	ORIGINAL RELEASE		
B	20120529-10	增加部分公差		



NOTES: UNLESS OTHERWISE SPECIFIED.

1. Applicable: For 5x20mm Fuse.
2. Electrical: Rated for current up to 10A250V AC.
3. Insulating body: Bakelite.
4. Terminals: Brass with Tin-plated solderable type.
5. Konb: Screw-driver slot fuse extractor type with nickle-plated copper alloy insert. spring loaded.
6. Metal nut Type: R3-11B plastic nut Type: R3-11A. Screw Type: R3-11C.
7. 未注公差: $\pm 0.5\text{mm}$.



东莞市市赛力特保险丝制造有限公司
DONGGUAN SELITTEL FUSES MFG CO., LTD

RoHS COMPLIANT		Panel Mount Fuseholder				CUSTOMER	
UNLESS OTHERWISE STATED		FOR 5x20mm fuse					
WALL THICKNESS		MM					
LINEAR	.X	±0.5	MM				
	.XX	±0.2	MM				
ANGULAR		±0.5	DEG				
DRAFT ANGLE/SIDE		0.5	°MAX				
BURR & FLASH		0.10	MAX				
BREAK CORNERS		0.20	R.MAX				
PARTING LINE MISMATCH		0.05	MAX				
				DSGN	Tom	12-22-08	SCALE free
				DFTS	TOM	12-22-08	SHEET 1 OF 1
				CHKD			PART NO.
				APPD			R3-11C
							REV B