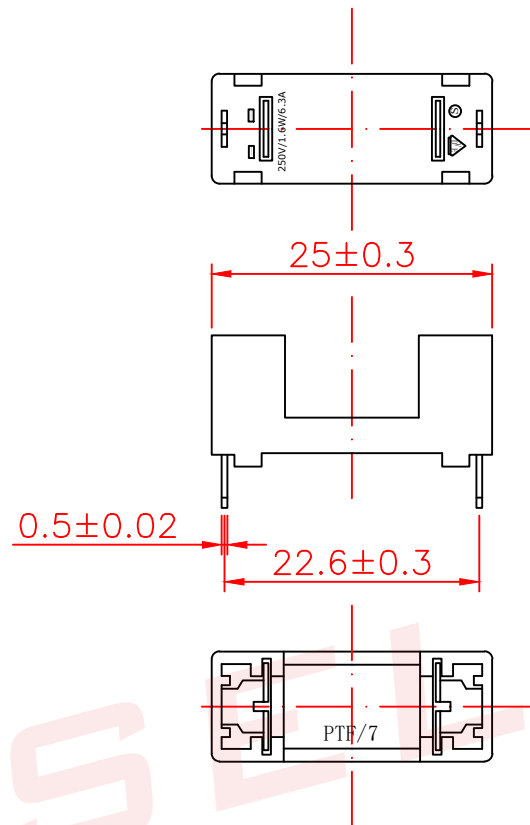
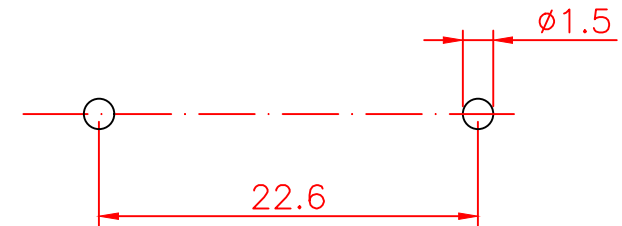


ALL INFORMATION CONTAINED OR DISCLOSED BY THIS DOCUMENT IS CONSIDERED CONFIDENTIAL AND PROPRIETARY BY SELLI ELECTRONICS CO.,LTD. ALL DESIGN, MANUFACTURING, USE, REPRODUCTION, AND ALL SALES RIGHTS, ARE EXPRESSLY RESERVED BY AND TO SELLI ELECTRONICS CO.,LTD. AND COMMUNICATION OF THIS INFORMATION TO OTHERS IS PROHIBITED WITHOUT THE PRIOR WRITTEN CONSENT OF SELLI

DRAWING REVISIONS				
REV	S/N	DESCRIPTION	APPROVED	DATE
A	2008021012	ORIGINAL RELEASE		

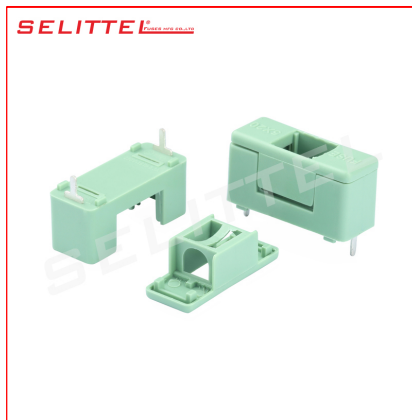


## Mounting Hole






NOTES: UNLESS OTHERWISE SPECIFIED.

1. Applicable: For 5x20mm Fuse.
2. Electrical: Rated for current up to 6.3A250VAC
3. Insulating Base body: PA With Green Color
4. Terminals: Brass with Tin-plated solderable type.



东莞市赛力特保险丝制造有限公司  
DONGGUAN SELITTE FUSES MFG CO., LTD

RoHS COMPLIANT			PCB Mount Fuseholder FOR 5x20mm fuse					CUSTOMER						
UNLESS OTHERWISE STATED														
WALL THICKNESS		 MM	DSGN		Tom		12-22-08		SCALE		free		 	
LINEAR	.XX	±0.15 MM												
	.XXX	±0.05 MM												
ANGULAR		±0.5 DEG	DFTS		TOM		12-22-08		SHEET		1 OF 1			
DRAFT ANGLE/SIDE		0.5 °MAX	CHKD						PART NO.				REV	
BURR & FLASH		0.10 MAX	APPD						PTF-78				A	
BREAK CORNERS		0.20 R.MAX												
PARTING LINE MISMATCH		0.05 MAX												