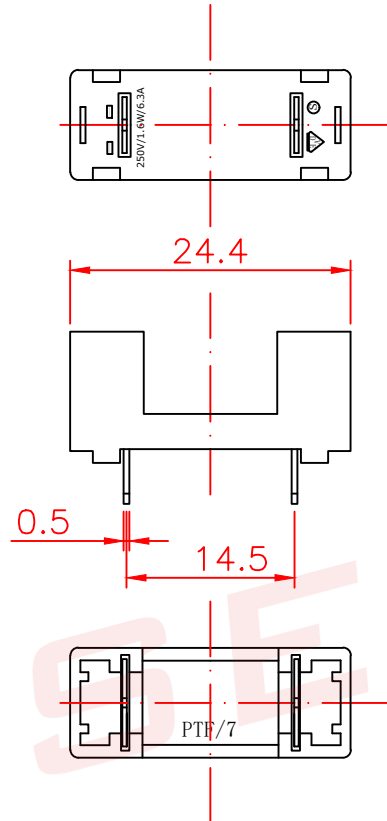


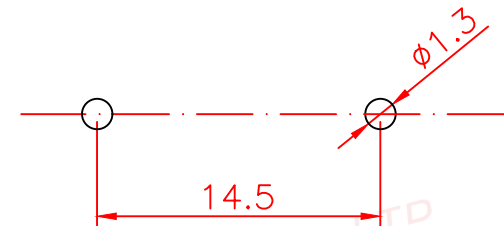
ALL INFORMATION CONTAINED OR DISCLOSED BY THIS DOCUMENT IS CONSIDERED CONFIDENTIAL AND PROPRIETARY BY SELLI ELECTRONICS CO.,LTD. ALL DESIGN, MANUFACTURING, USE, REPRODUCTION, AND ALL SALES RIGHTS, ARE EXPRESSLY RESERVED BY AND TO SELLI ELECTRONICS CO.,LTD. AND COMMUNICATION OF THIS INFORMATION TO OTHERS IS PROHIBITED WITHOUT THE PRIOR WRITTEN CONSENT OF SELLI

| DRAWING REVISIONS |             |                  |          |      |
|-------------------|-------------|------------------|----------|------|
| REV               | S/N         | DESCRIPTION      | APPROVED | DATE |
| A                 | 20080210-13 | ORIGINAL RELEASE |          |      |

Base



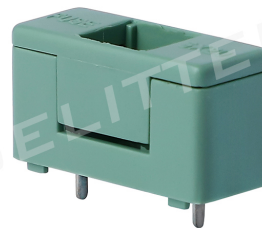
Mounting Hole





NOTES: UNLESS OTHERWISE SPECIFIED.

1. Applicable: For 5x20mm Fuse.
2. Electrical: Rated for current up to 6.3A250VAC
3. Insulating Base body: PA66  
Cap: PA66
4. Terminals: Brass with Tin-plated solderable type.

SELITTE



东莞市赛力特保险丝制造有限公司  
DONGGUAN SELITTE FUSES MFG CO., LTD

| RoHS COMPLIANT          |      |  | PCB Mount Fuseholder<br>FOR 5x20mm fuse |     |          |          | CUSTOMER |   |
|-------------------------|------|--|---|-----|----------|----------|----------|---|
| UNLESS OTHERWISE STATED |      |  |   |     |          |          |          |   |
| WALL THICKNESS          |      |  MM | DSGN                                    | Tom | 12-22-08 | SCALE    | free     |  |
| LINEAR                  | .XX  | ±0.15 MM   |   |     |          |          |          |   |
|                         | .XXX | ±0.05 MM   |   |     |          |          |          |   |
| ANGULAR                 |      | ±0.5 DEG   | DFTS                                    | TOM | 12-22-08 | SHEET    | 1 OF 1   |   |
| DRAFT ANGLE/SIDE        |      | 0.5 °MAX   |   |     |          |          |          |   |
| BURR & FLASH            |      | 0.10 MAX   |   |     |          |          |          |   |
| BREAK CORNERS           |      | 0.20 R.MAX   | CHKD                                    |     |          | PART NO. |          | REV   |
| PARTING LINE MISMATCH   |      | 0.05 MAX   |   |     |          |          |          |   |
|                         |      |  |   |     |          | PTF-76   |          | A   |