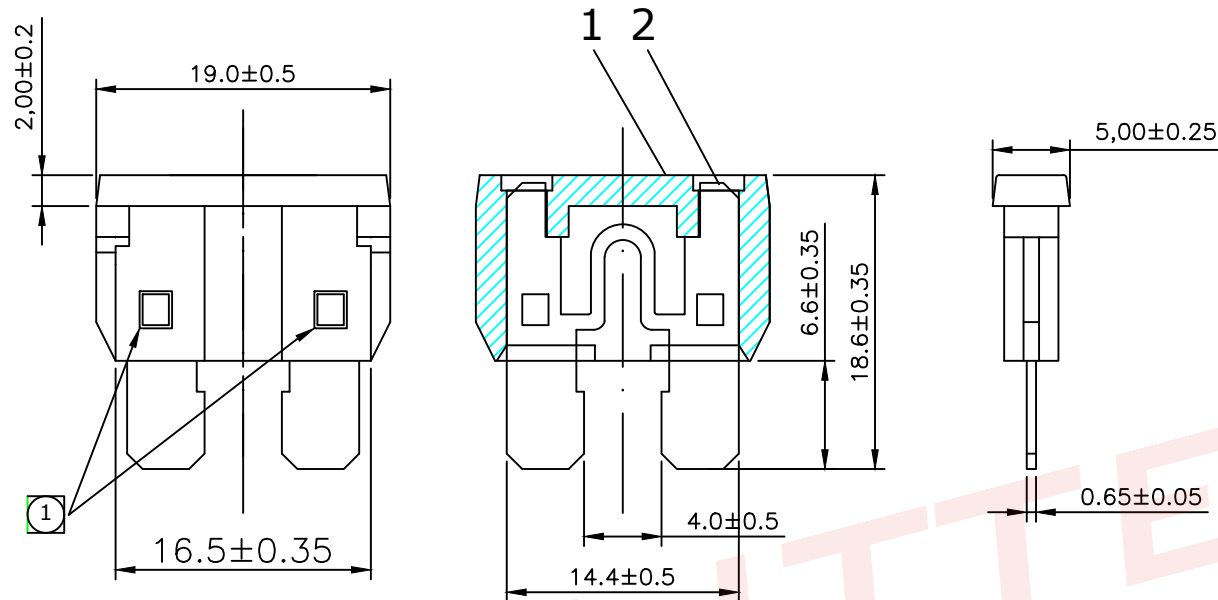


ALL INFORMATION CONTAINED OR DISCLOSED BY THIS DOCUMENT IS CONSIDERED CONFIDENTIAL AND PROPRIETARY BY ANDU ELECTRONICS CO.,LTD. ALL DESIGN, MANUFACTURING, USE, REPRODUCTION, AND ALL SALES RIGHTS, ARE EXPRESSLY RESERVED BY ANDU TO ANDU ELECTRONICS CO.,LTD. AND COMMUNICATION OF THIS INFORMATION TO OTHERS IS PROHIBITED WITHOUT THE PRIOR WRITTEN CONSENT OF ANDU



NOTES: UNLESS OTHERWISE SPECIFIED.

1. PUNCH HERE, DEPTH: 0.5mm AT TWO SIDE.
2. the fuses shown are for in motor vehicles, boats and trailers to protect electrical wiring and vehicles. This standard is for the construction shown and is not intended to restrict the design and use of other configurations and materials capable of meeting the vehicle requirements.
3. A fuse is a device designed to interrupt the electrical circuit when subjected to overcurrents. This action is to be nonreversible and the fuse is intended to be replaced after the circuit, malfunction has been corrected. capable of meeting the vehicle requirements.
4. Rating and fuse color code, see list;

DRAWING REVISIONS

REV	S/N	DESCRIPTION	APPROVED	DATE
A	20080210-03	ORIGINAL RELEASE		
B	20090213-02	Changed thickness		
C	20090406-01	Changed tolerance		
E	2021030821	Add 1IN standard		

5. Volt: 32V DC; Interrupting Rating:1000A @ 32 VDC
48V DC; Interrupting Rating:1000A @ 48 VDC
58V DC; Interrupting Rating:500A @ 58 VDC

6. Operating temperature: -40 °C to +125 °C

7. Functional Characteristics

TESTING CURRENT

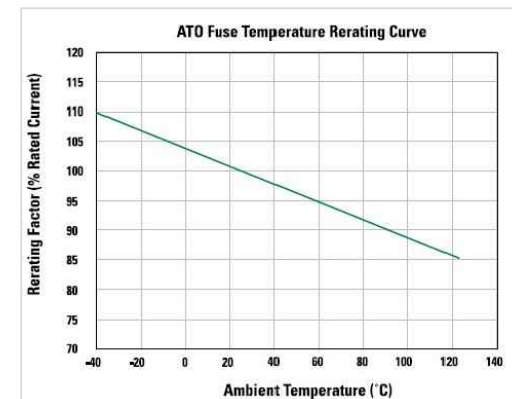
100%
110%
135%
200%

BLOW TIME LIMIT




100hours minimum
4hours minimum
0.75sec-1800sec
0.15sec-5sec

8. Standard: SAE J1284; ISO 8820; SAE J2077;
UL 248 Special Purpose Fuses;

9. ATON fuse temperature derating curve:



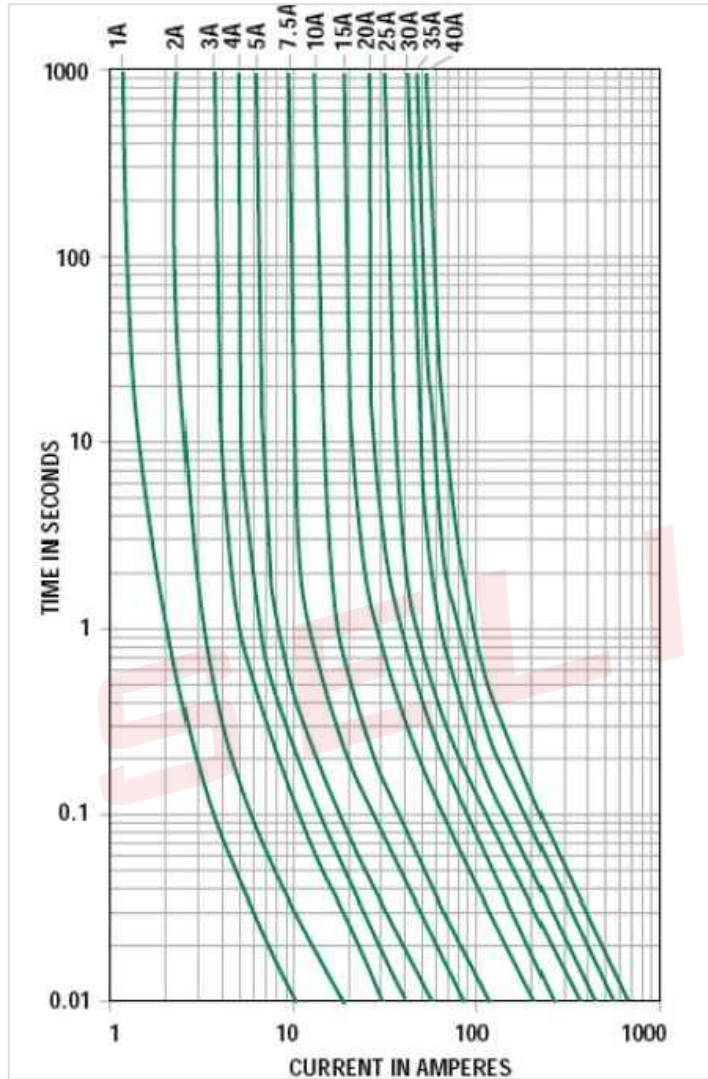
东莞市赛力特保险丝制造有限公司
DONGGUAN SELITTEL FUSES MFG CO., LTD

RoHS COMPLIANT			AUTO PLUG-IN FUSE					CUSTOMER		
UNLESS OTHERWISE STATED										
WALL THICKNESS		 MM	ATON							
LINEAR	.XX	±0.15								
	.XXX	±0.05	MM							
ANGULAR		±0.5	DEG	DSGN	Tommy Qiu	07-12-08	SCALE	free	 	
DRAFT ANGLE/SIDE		0.5	°MAX	DFTS	Tommy Qiu	07-12-08	SHEET	1 OF 2		
BURR & FLASH		0.10	MAX	CHKD			PART NO.	SEE THE LIST		
BREAK CORNERS		0.20	R.MAX							
PARTING LINE MISMATCH		0.05	MAX							
				APPD					REV	E

ALL INFORMATION CONTAINED OR DISCLOSED BY THIS DOCUMENT IS CONSIDERED CONFIDENTIAL AND PROPRIETARY BY ANDU ELECTRONICS CO.,LTD. ALL DESIGN, MANUFACTURING, USE, REPRODUCTION, AND ALL SALES RIGHTS, ARE EXPRESSLY RESERVED BY ANDU TO ANDU ELECTRONICS CO.,LTD. AND COMMUNICATION OF THIS INFORMATION TO OTHERS IS PROHIBITED WITHOUT THE PRIOR WRITTEN CONSENT OF ANDU

DRAWING REVISIONS				
REV	S/N	DESCRIPTION	APPROVED	DATE
A	20080210-03	ORIGINAL RELEASE		
B	20090213-02	Changed thickness		
C	20090406-01	Changed tolerance		
D	2011082011	Add the Nominal Resistance Cold Ohms.		
E	2014092122	Change all the color as standard.		
F	2020110621	Add I2T		



10. Functional Characteristics curve;



ITEM	COLOR	I2t A2S	Nominal Resistance Cold Ohms.	Current Rating	Housing Color
1	little Green	1.4	61m ω	1 A	
2	GREY	4.5	32.5m ω	2 A	
3	VIOLET	4.8	28.5m ω	3 A	
4	PINK	7.8	22.6m ω	4 A	
5	TAN	17	17.9m ω	5 A	
6	BROWN	51.6	11.8m ω	7.5 A	
7	RED	120	7.9m ω	10 A	
8	BLUE	424	5.1m ω	15 A	
9	YELLOW	720	3.8m ω	20 A	
10	CLEAR	1108	2.9m ω	25 A	
11	GREEN	1600	2.45m ω	30 A	
12	PURPLE	1800	2.1m ω	35 A	
13	ORANGE	2200	1.8m ω	40 A	



东莞市赛力特保险丝制造有限公司
DONGGUAN SELITTEL FUSES MFG CO., LTD

RoHS COMPLIANT			AUTO PLUG-IN FUSE					CUSTOMER	
UNLESS OTHERWISE STATED									
WALL THICKNESS		 MM	ATON						
LINEAR	.XX	±0.15 MM							
	.XXX	±0.05 MM	DSGN		Tommy Qiu	07-12-08	SCALE	free	
ANGULAR		±0.5 DEG	DFTS	Tommy Qiu	07-12-08	SHEET	2 OF 2		
DRAFT ANGLE/SIDE		0.5 °MAX	CHKD			PART NO.		REV	
BURR & FLASH		0.10 MAX							
BREAK CORNERS		0.20 R.MAX	APPD			SEE THE LIST			F
PARTING LINE MISMATCH		0.05 MAX							

2	TC-1912-N	TERMINAL CONTACT	1	Zn Alloy	SEE THE LIST
1	PB-1912-N	PLASTIC BASE	1	PA	SEE THE LIST
ITEM	P/N	DESCRIPTION	QTY	Material	REMARKS