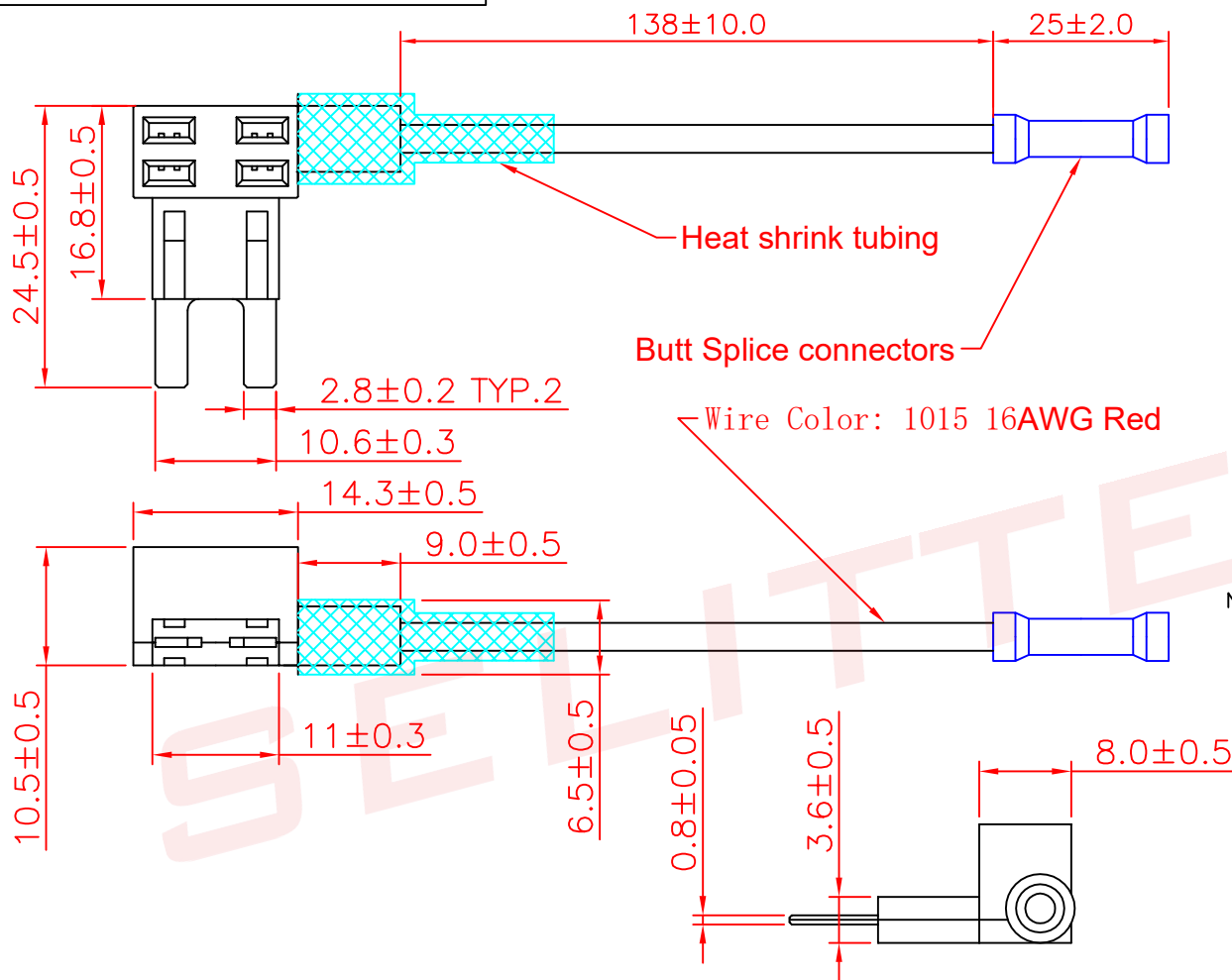


ALL INFORMATION CONTAINED OR DISCLOSED BY THIS DOCUMENT IS CONSIDERED CONFIDENTIAL AND PROPRIETARY BY ANDU ELECTRONICS CO.,LTD. ALL DESIGN, MANUFACTURING, USE, REPRODUCTION, AND ALL SALES RIGHTS, ARE EXPRESSLY RESERVED BY ANDU TO ANDU ELECTRONICS CO.,LTD. AND COMMUNICATION OF THIS INFORMATION TO OTHERS IS PROHIBITED WITHOUT THE PRIOR WRITTEN CONSENT OF SELL


DRAWING REVISIONS				
REV	S/N	DESCRIPTION	APPROVED	DATE
A	2015080835	ORIGINAL RELEASE		



NOTES: UNLESS OTHERWISE SPECIFIED.

1. Applicable: For MIN/ATM-N Fuse.
2. Electrical: Rated for current up to 15A.
3. Insulating body: PA,
4. Contact: Brass with Tin plated.
5. With other wire sizes or leangths available on special order.
6. This inline fuseholder designed for turn one slot into two.
7. Butt splice connector pull-out force min 15Kg.

5	C-ACU-N	Connectors	1	Brass/PP	Blue
4	W-ACS-N	Wire	1	1015 16AWG	Red
3	H-ACS-N	Heat shrink tubing	1	PVC/PE	Black
2	TC-ACS-N	TERMINAL CONTACT	3	Brass	Tin Plated
1	FH-ACS-N	Body	2	PA	Black
ITEM	P/N	DESCRIPTION	QTY	Material	REMARKS

		东莞市赛力特保险丝制造有限公司 SELITEL FUSES MFG CO., LTD		
RoHS COMPLIANT		FUSEHOLDER		Customer
UNLESS OTHERWISE STATED		FOR MIN/ATM		
WALL THICKNESS				
LINEAR	.XX	±0.15	MM	
	.XXX	±0.05	MM	
ANGULAR		±0.5	DEG	
DRAFT ANGLE/SIDE		0.5	°MAX	
BURR & FLASH		0.10	MAX	
BREAK CORNERS		0.20	R.MAX	
PARTING LINE MISMATCH		0.05	MAX	
DSGN	Kevin		SCALE	free
DFTS	Owen		SHEET	1 OF 1
CHKD			PART NO.	
APPD			ACS-150-16	REV A